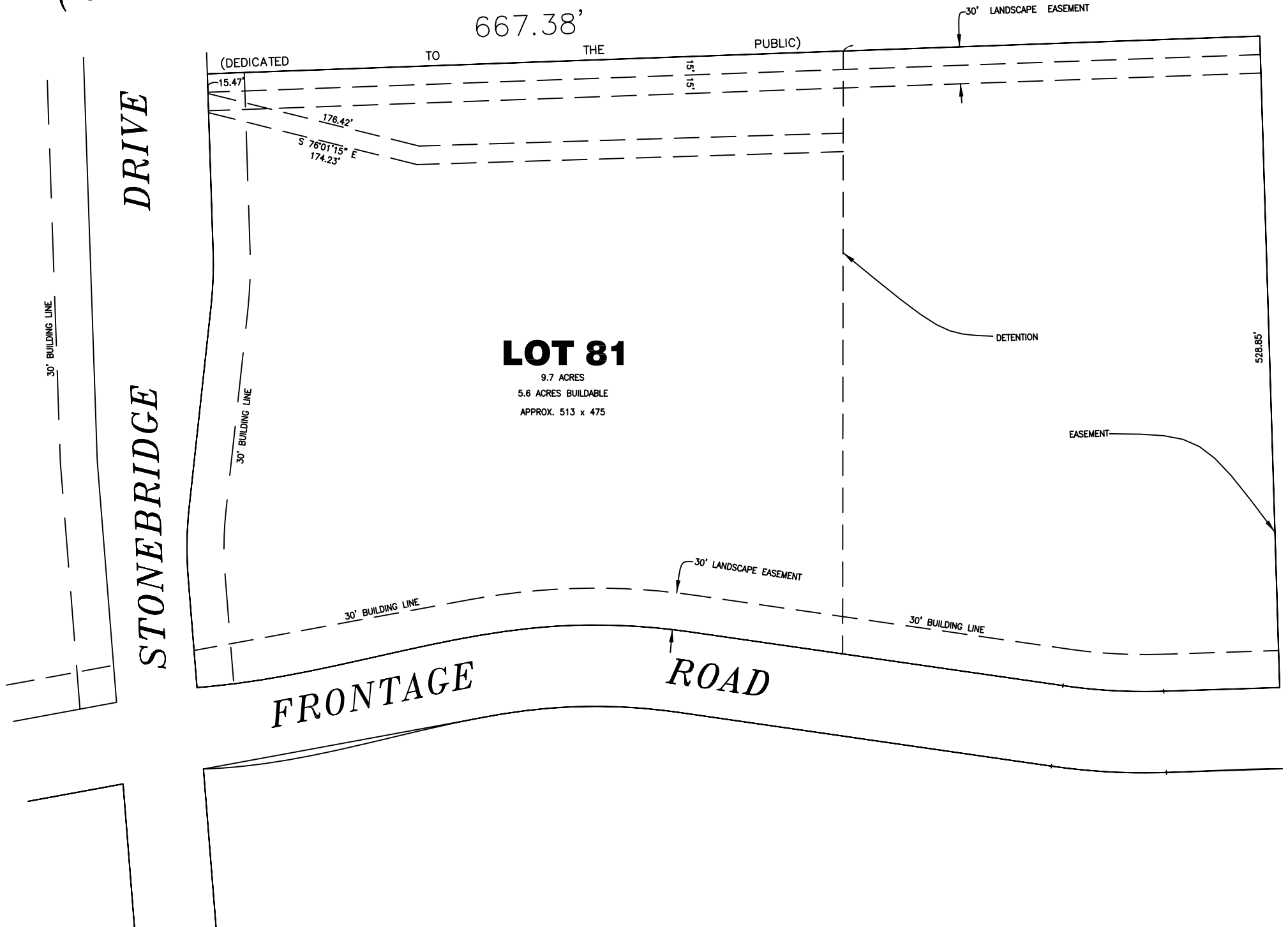


(159th St. ILLINOIS ROUTE 7)



667.38'

30' LANDSCAPE EASEMENT

(DEDICATED

TO

THE

PUBLIC)

15.47'

15' 15"

176.42'

S 76°01'15" E  
174.23'

**LOT 81**

9.7 ACRES  
5.6 ACRES BUILDABLE  
APPROX. 513 x 475

DETENTION

EASEMENT

528.85'

30' BUILDING LINE

STONEBRIDGE DRIVE

30' BUILDING LINE

30' BUILDING LINE

30' LANDSCAPE EASEMENT

30' BUILDING LINE

FRONTAGE ROAD